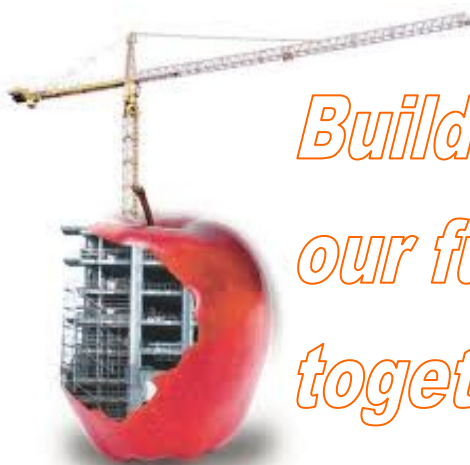


School Modernization Project



*Building
our future
together*

Last February Entiat School District ran a bond proposition for \$7.95 million. Following its narrow defeat, the facilities committee worked with a new architect to develop a better, less expensive plan...

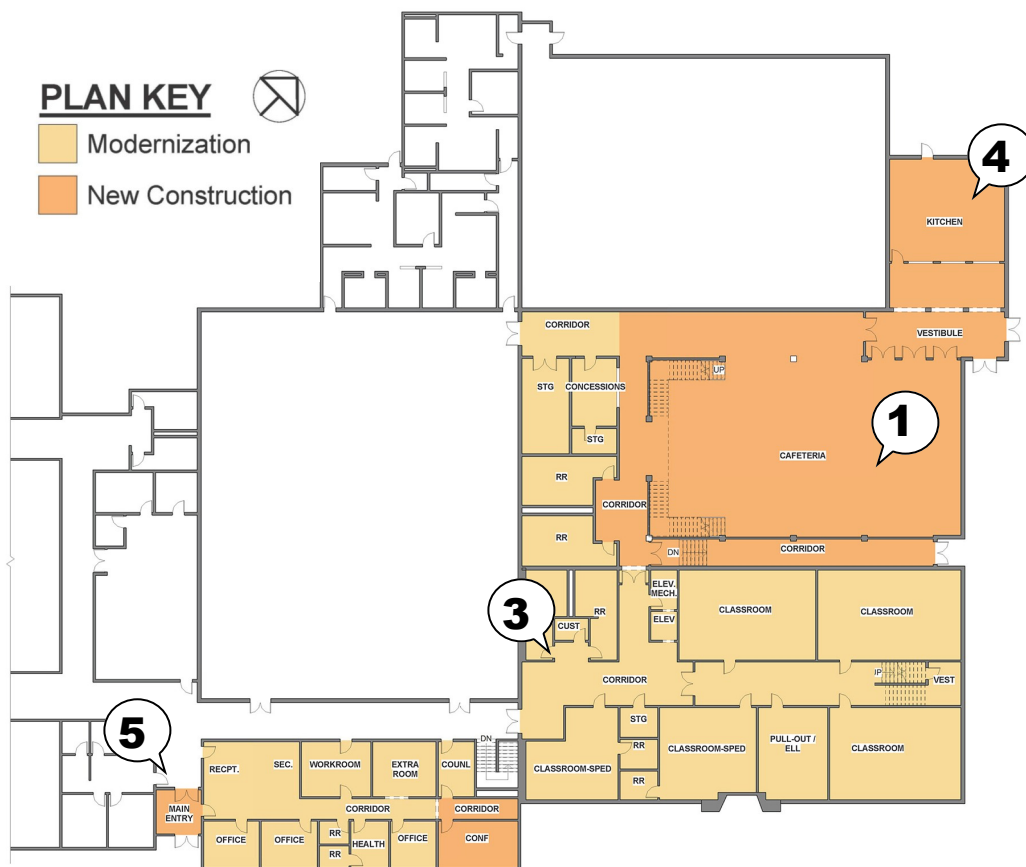
WHAT DOES THE NEW PLAN ACCOMPLISH?

1. A new cafeteria improves access and safety for students and others.
2. New classrooms are added to the second floor.
3. Modernizing and reconfiguring the elementary wing creates additional space for classrooms and storage to handle a growing student population. It also allows special education classes to be relocated to a more central location.
4. Relocating the kitchen improves efficiency and safety and provides easier access for deliveries.
5. Changing to one main entrance by the administration offices allows for greater security measures and enhances student safety.

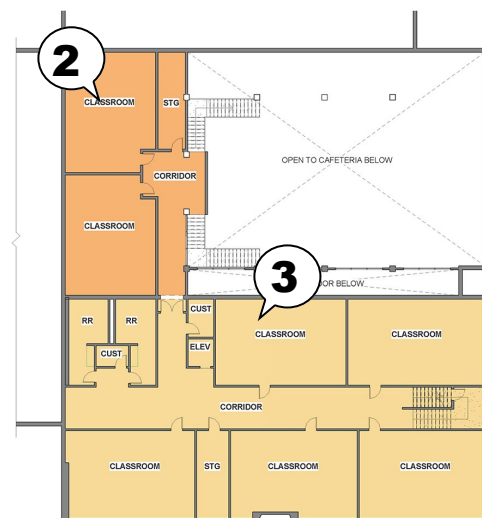
More on other side...

PLAN KEY

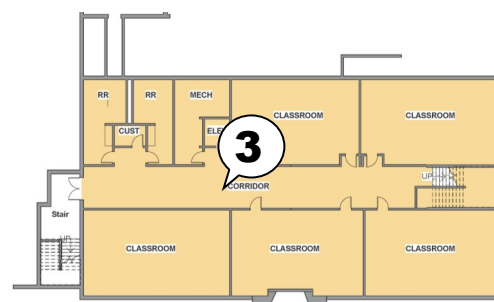
- Modernization
- New Construction



FIRST FLOOR PLAN



SECOND FLOOR PLAN



BASEMENT PLAN

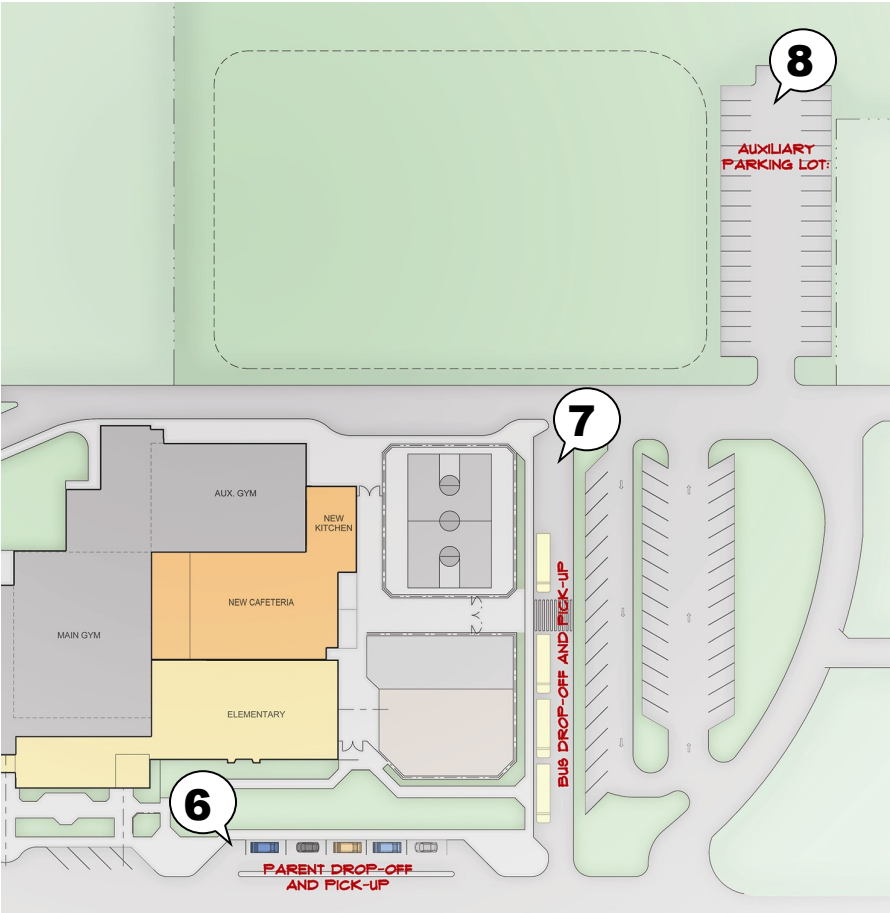
- 6. A new Parent Drop-Off Lane improves safety without sacrificing convenience.
- 7. The new Bus Lane produces a safer traffic pattern for children crossing to the play field.
- 8. Additional parking spaces will be created in a new lot to help with overflow at sporting events and other functions.

Modernization involves gutting an existing building, replacing outdated or inefficient systems, and reworking the space to better fit the school’s needs.

New construction means building a completely new space outside the walls of the existing building

WHAT’S THE BOTTOM LINE?

Entiat School District is proposing a \$5.6 million 20-year construction bond. The projected cost to taxpayers will be around \$1.79 per \$1000. This is \$0.61 more than the current bond rate of \$1.18. The current bond expires in December 2013. The chart below shows how passing the bond would affect property taxes (amounts have been rounded).



Assessed Property Value	New Bond Yearly Total \$1.79 per \$1000 beginning 2014	Expiring Bond Yearly Total \$1.18 per \$1000 ending 2013	Increased Taxes per Year	Increased Taxes per Month
\$75,000	\$134.25	(\$88.50)	\$45.75	\$3.81
\$100,000	\$179.00	(\$118.00)	\$61.00	\$5.08
\$150,000	\$268.50	(\$177.00)	\$91.50	\$7.63
\$175,000	\$313.25	(\$206.50)	\$106.75	\$8.90
\$225,000	\$402.75	(\$265.50)	\$137.25	\$11.44
\$300,000	\$537.00	(\$354.00)	\$183.00	\$15.25
\$400,000	\$716.00	(\$472.00)	\$244.00	\$20.33

QUESTIONS OR COMMENTS ABOUT THE SCHOOL BOND OR CONSTRUCTION PLANS?

An informational meeting will be held in the school library on October 9th at 7pm, followed by a tour of the school, or you can call the Entiat School District Office: (509) 784-1800.